

Session 4

Exchange Space on Climate Change Adaptation

Angelika Tamasova, EEA
ESDN Conference 2021 European Recovery and Resilience Mechanisms
- Challenges in systemic SD approaches
1 December 2021

Climate Change Adaptation – SoP in Europe

EUROPEAN GREEN DEAL (2019)

‘aims to transform the EU into a fair and prosperous society, with a modern, resource-efficient and competitive economy where there are no net emissions of greenhouse gases in 2050 and where economic growth is decoupled from resource use’

‘strengthening the efforts on climate-proofing, resilience building, prevention and preparedness is crucial’

EUROPEAN ADAPTATION STRATEGY (2020)

‘The long-term vision is that in 2050, the EU will be **a climate-resilient society**, fully adapted to the unavoidable impacts of climate change. By 2050 we aim to have reached climate neutrality, we will have reinforced adaptive capacity and minimized vulnerability to climate impacts.’

‘by making adaptation **smarter, more systemic, swifter and by stepping up international action**’

EUROPEAN CLIMATE LAW (2021)

‘The relevant Union institutions and the Member States shall ensure continuous progress in enhancing adaptive capacity, strengthening resilience and reducing vulnerability to climate change in accordance with Article 7 of the Paris Agreement.’

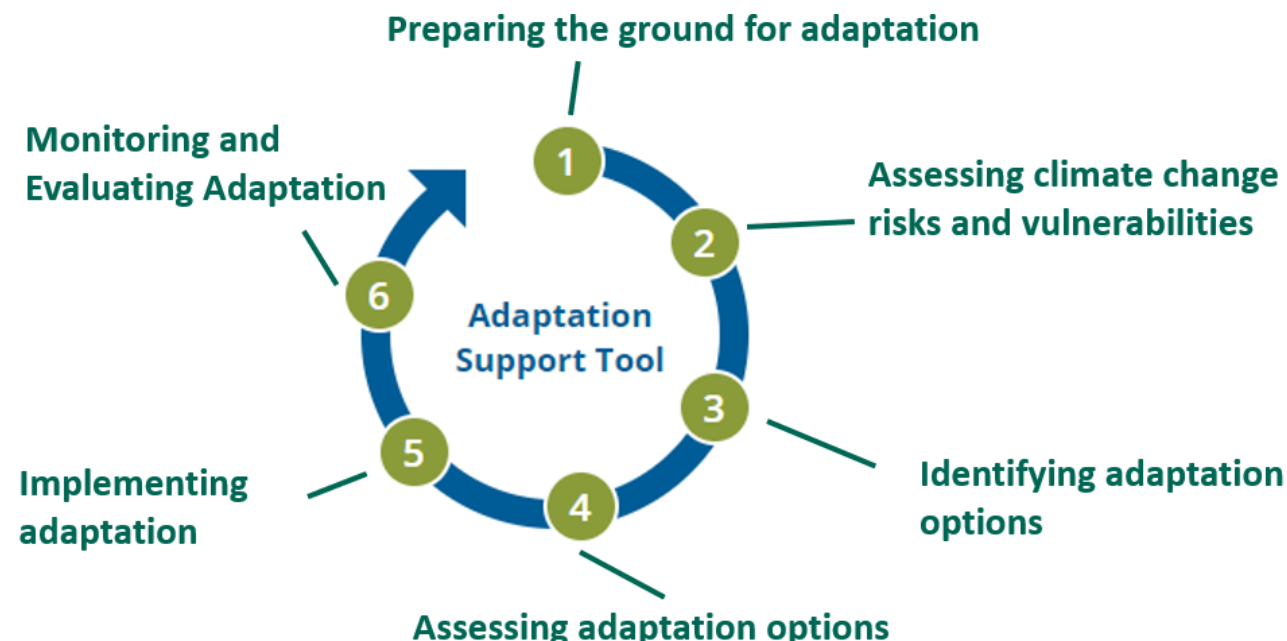
Do you know the Adaptation Support Tool?

EUROPEAN CLIMATE LAW (2021)

‘MS **shall** adopt and implement **national adaptation strategies and plans**, taking into consideration the EUAS and based on robust climate change and vulnerability analyses, progress assessments and indicators, and guided by the best available and most recent scientific evidence.’

ADAPTATION SUPPORT TOOL

‘**practical guidance tool** for national level actors, e.g., policymakers for all steps needed to develop, implement, monitor and evaluate a national adaptation strategy or a plan’

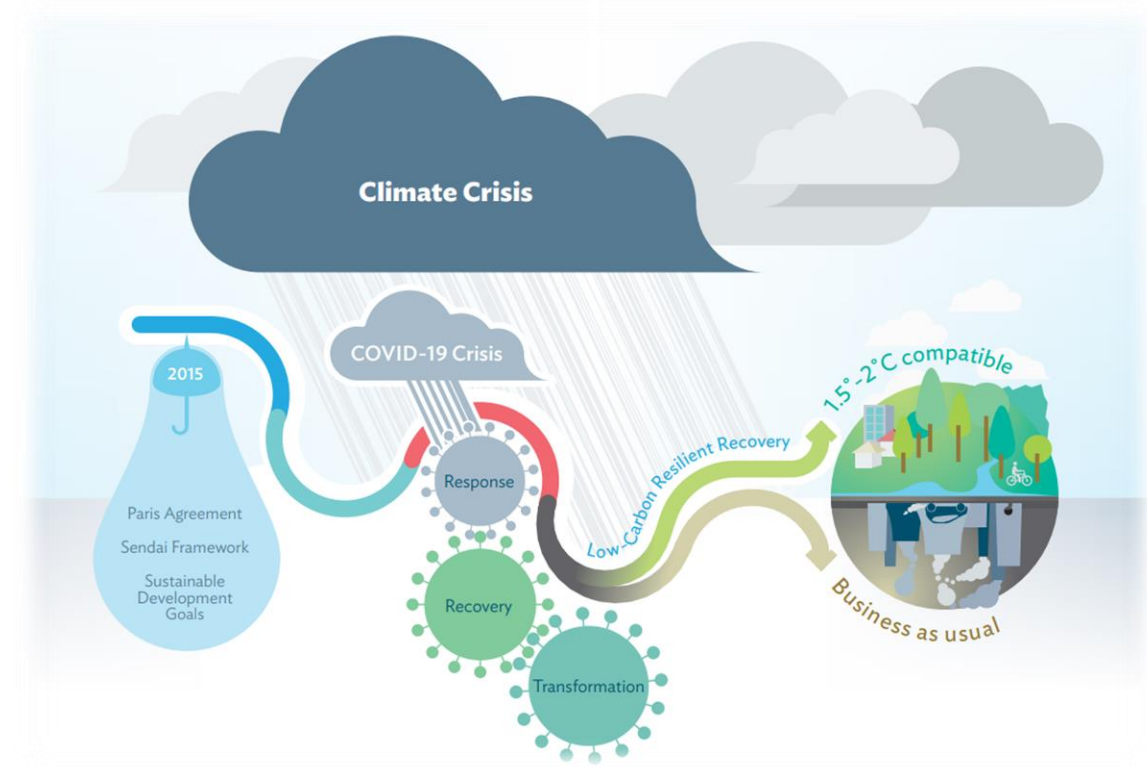


Adaptation in the context of Recovery and Resilience

NEXT GENERATION EU

EU RECOVERY AND RESILIENCE FACILITY (2021)

- Climate change adaptation and resilience objectives embedded in the EU-level COVID-19 pandemic recovery effort.
- Supporting the recovery is central in the short and medium term, in long-term resilience needs to be achieved.
- The **National Recovery and Resilience Plans** support investments and reforms to improve climate resilience across the entire EU. At least **37% of the allocation of the plans should be directed to climate action covering both mitigation and adaptation efforts.**



Green transition

Around **40%** (€177bn) of total allocation¹ is tracked as contributing to climate objectives
In broader terms, **43%** (€192bn) is tracked as contributing to green objectives



Key investments

- Sustainable mobility (€64bn)
- Renovation and energy efficiency (€50bn)
- Clean power and networks (€30bn)
- Biodiversity and climate change adaptation (€17bn)
- Circular economy and water management (€15bn)

Key reforms

- Promote inter-modality and tax incentives for clean vehicles
- Facilitate deployment of renewable energy
- Water and waste management and nature conservation
- Permitting and environmental taxation

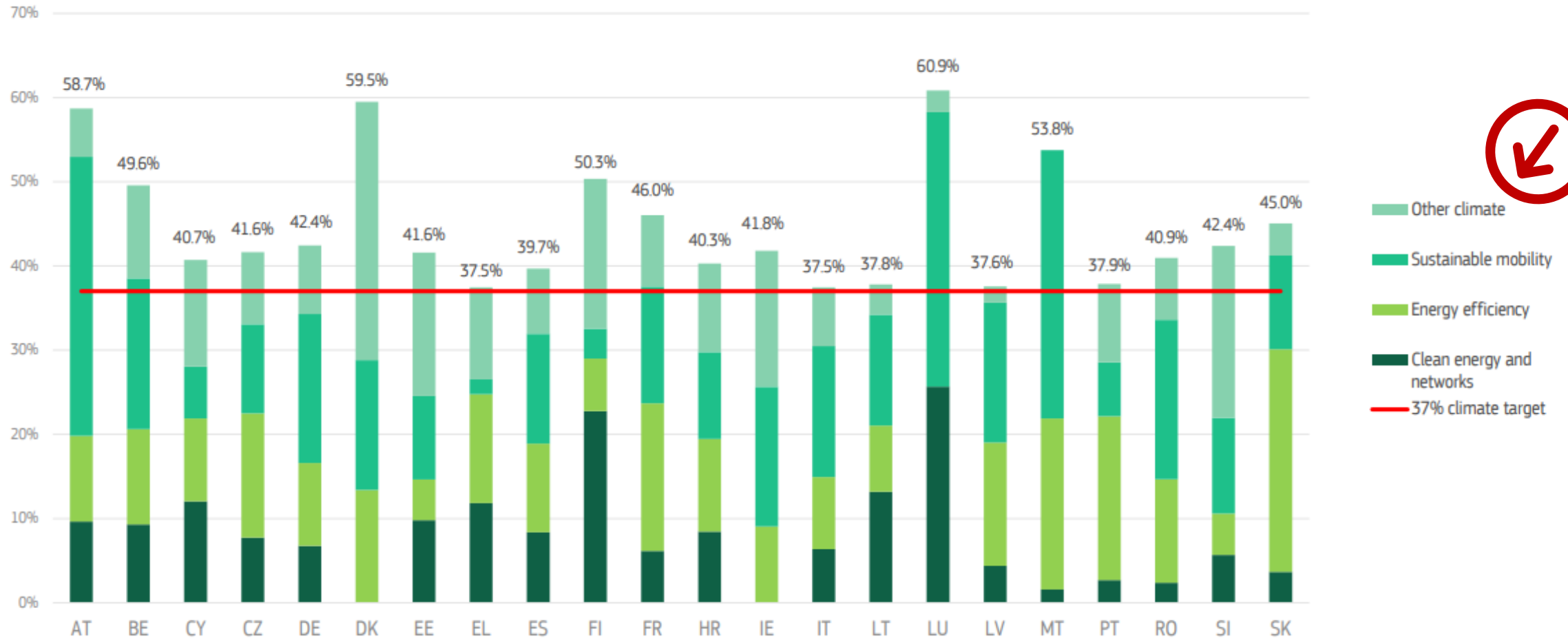
Cross-border projects

- TEN-T rail corridors
- Hydrogen
- Batteries



¹ Based on 22 assessed RRP by Commission, equivalent to €445bn

Climate contribution in the 22 assessed plans



Source: Expert Group Greening the European Semester / Environmental Implementation Review, 13 October 2021

Biodiversity & climate change adaptation



Biodiversity

- Around **€5bn*** (in 13 out of 22 plans)

Investments

- Restoration and preservation of wetlands and forests
- Conservation of terrestrial and marine biodiversity
- Green infrastructure

Climate change adaptation

- Around **€12bn*** (in 15 out of 22 plans)

Investments

- Forest management / forest fire protection
- Flood protection measures to increase water retention capacity
- ✓ Many of the climate adaptation measures **directly contribute to biodiversity** by using nature-based solutions

Respect of the DNSH principle shall take into account the **protection and restoration of biodiversity & climate change adaptation**

* Based on climate coefficients

Challenges, gaps and needs & good practices

Topic A: Climate resilient infrastructures



- Adaptation must be actively **mainstreamed** to all relevant policy fields applicable to both the public and the private sectors.
- *‘In their national adaptation strategies, Member States shall take into account the particular vulnerability of the relevant sectors, inter alia, **agriculture, and of water and food systems, as well as food security ...**’*
- EGD, a revised set of **taxonomy** rules including new criteria for adaptation will lay the ground for climate-resilient investments. **Climate-proofing investments** is especially critical in the context of the EGD and Covid-19-related recovery packages.

Challenges, gaps and needs & good practices

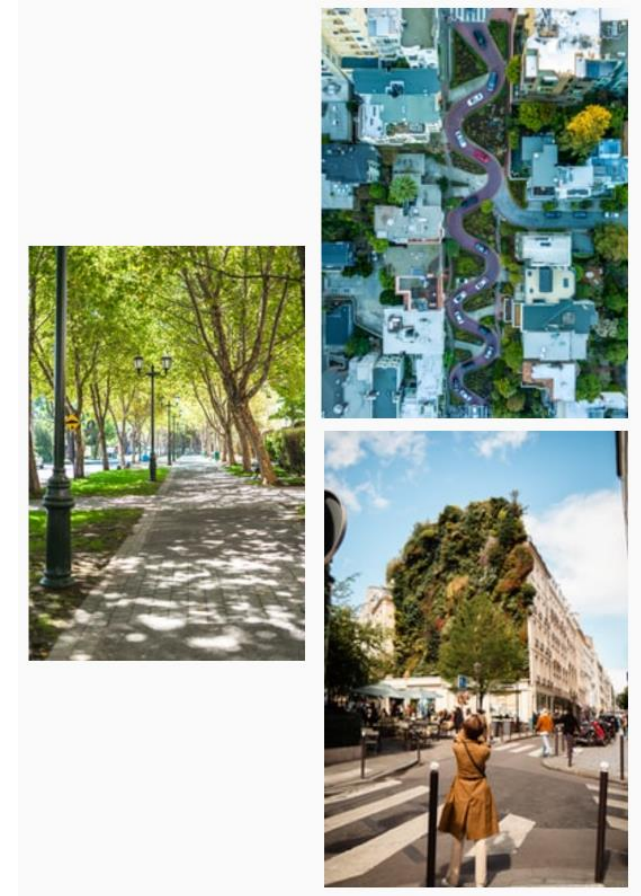
Topic B: Regional and local adaptation

- The local level is the bedrock of adaptation.
- The EU support must help increase local resilience.
- **Horizon Europe Mission on Adaptation to Climate Change, including Societal Transformation**

The Mission would test integrated solutions that can achieve the vision of climate-resilience by 2030 with an emphasis on citizen engagement. The Mission proposal aims to support 150 European regions and communities to develop solutions for transformative adaptation and scale up 75 deep demonstrations of climate-resilience.

- **Synergies with the Renovation Wave**

We need to do more to prepare Europe's building stock to withstand the impacts of climate change. The Renovation Wave and the Circular Economy Action Plan identify climate resilience as a key principle.



Challenges, gaps and needs & good practices

Topic C: Nature-based solutions



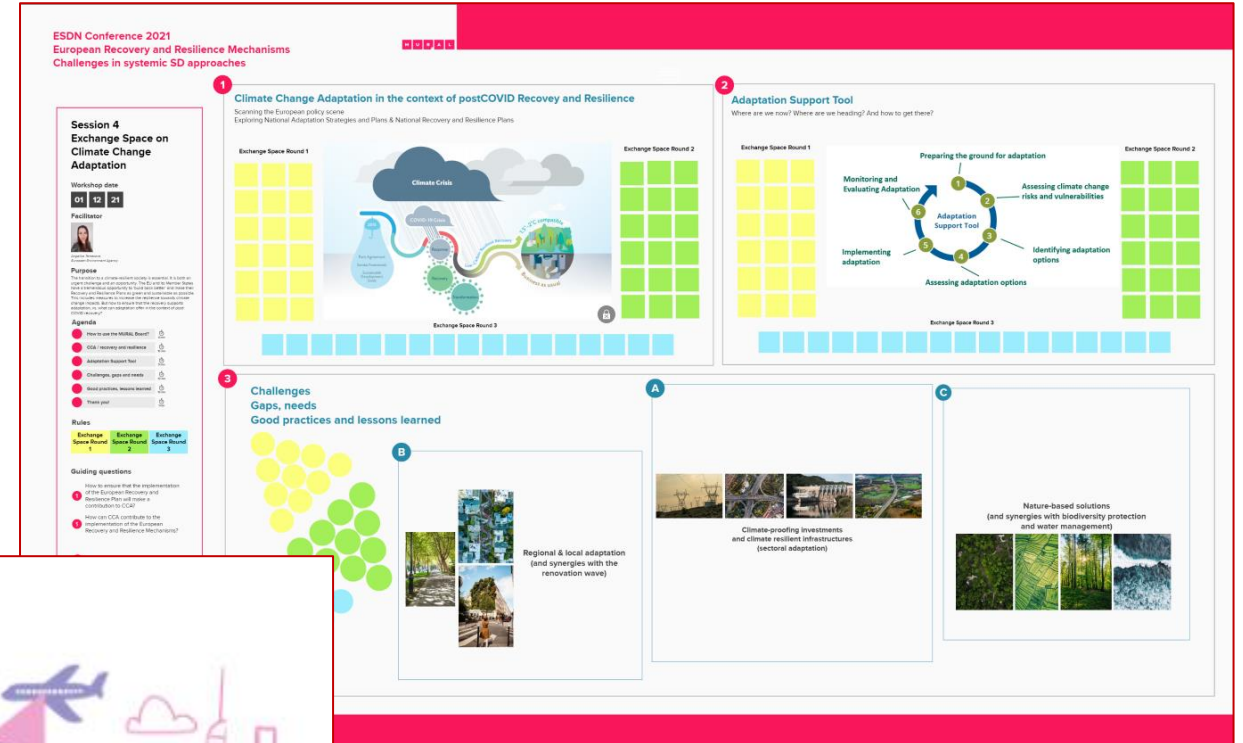
- *'In their national adaptation strategies, Member States shall ... **promote nature-based solutions and ecosystem-based adaptation.***
- Synergies with biodiversity protection and potential mitigation co-benefits.
- Already in the national recovery and resilience plans: restoration and preservation of wetlands and forests, green infrastructure, forest management, flood protection measures to increase water retention capacity.

Working in Mural

Visitors link (in chat):

- <https://app.mural.co/t/climatechangeadaptation5970/m/climatechangeadaptation5970/1637329743718/94c35a18901ee46c0980992123368db8f951a116?sender=u9a2bc0660b77255e303f4721>

MURAL



Thank you for your attention

